

What Would You QEMU?

Ethan Gates, Yale University Library

10/14/2021

BitCurator Users Forum



Quick Emulator

Ethan's pronunciation:

“Kyoo - emyoo”



What is QEMU?

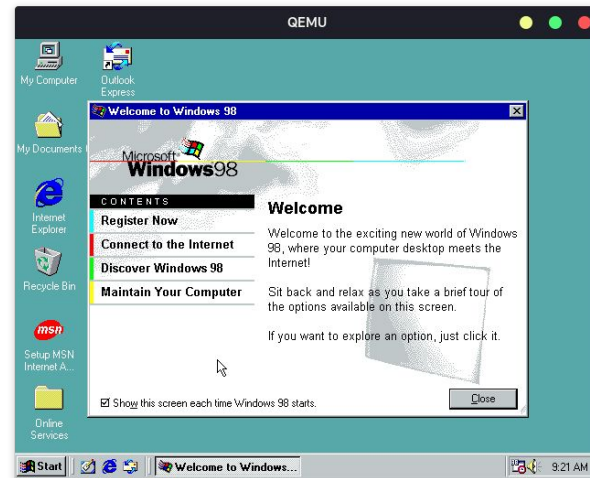
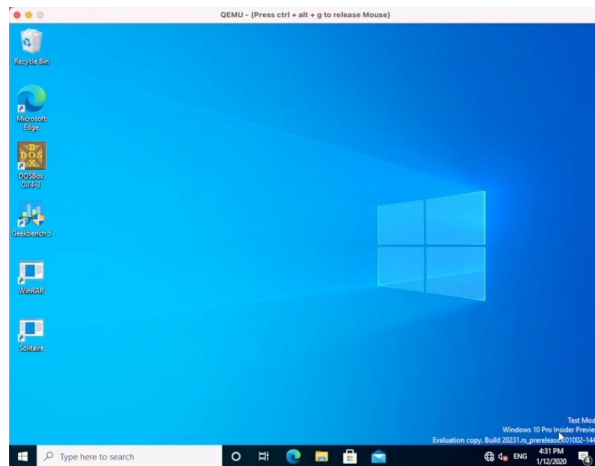
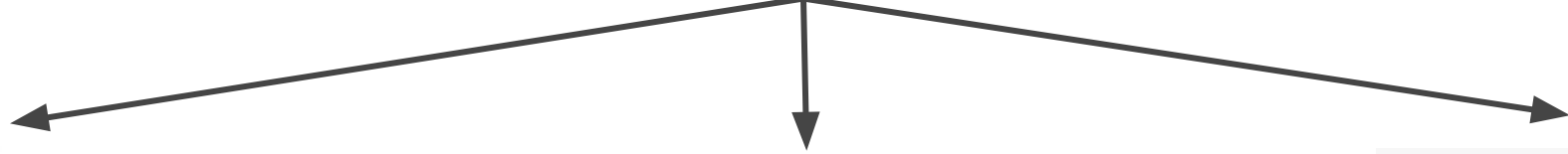
- Free and open source
- Created 2003 by Fabrice Bellard (also the original developer of FFmpeg)
- Generic computer emulator and virtualizer
- Alternative to: VirtualBox, VMWare, Parallels



vmware®

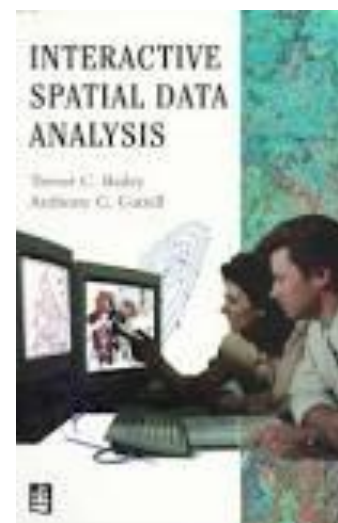
|| Parallels™





Interactive spatial data analysis

- Author [Bailey, Trevor C., 1953-](#)
- Title [Interactive spatial data analysis / Trevor C. Bailey, Anthony C. Gatrell.](#)
- ISBN [0582244935 \(pbk.\)](#)
- Published [Harlow Essex, England ; New York : Prentice Hall, 1995.](#)
- Physical [xiv, 413 p. : ill., maps ; 24 cm. + 1 computer disk \(3 1/2 in.\)](#)
- Description
- Format [📖 Books](#)
- Language [English](#)
- Added to [July 11, 2006](#)
- Catalog
- System details [System requirements for accompanying computer disk: IBM PC \(or compatible\) with a least a 286 processor](#)
note [running under DOS; a hard disk and an EGA or VGA card and colour monitor.](#)
- Bibliography [Includes bibliographical references and index.](#)
- Subjects [Spatial analysis \(Statistics\)](#)
- Also listed [Gatrell, Anthony C.](#)
under
- Bookmark As <https://search.libraryyale.edu/catalog/7590525>



Machine View

File Edit Data Map Overlay Analysis Preferences Setup Help

INFO-MAP Ver:6.1

Interactive
Spatial Data Analysis
Copyright (C) 1990-1995
Claymore Services Ltd
Distributed by
Longman Scientific & Technical
Serial No: ██████████
Restricted Registration
Henry Glick
Yale



Machine View

File Edit Data Map Overlay Analysis Preferences Setup Help



Options
Data item mapped
Specified fixed data item

Set Scaling

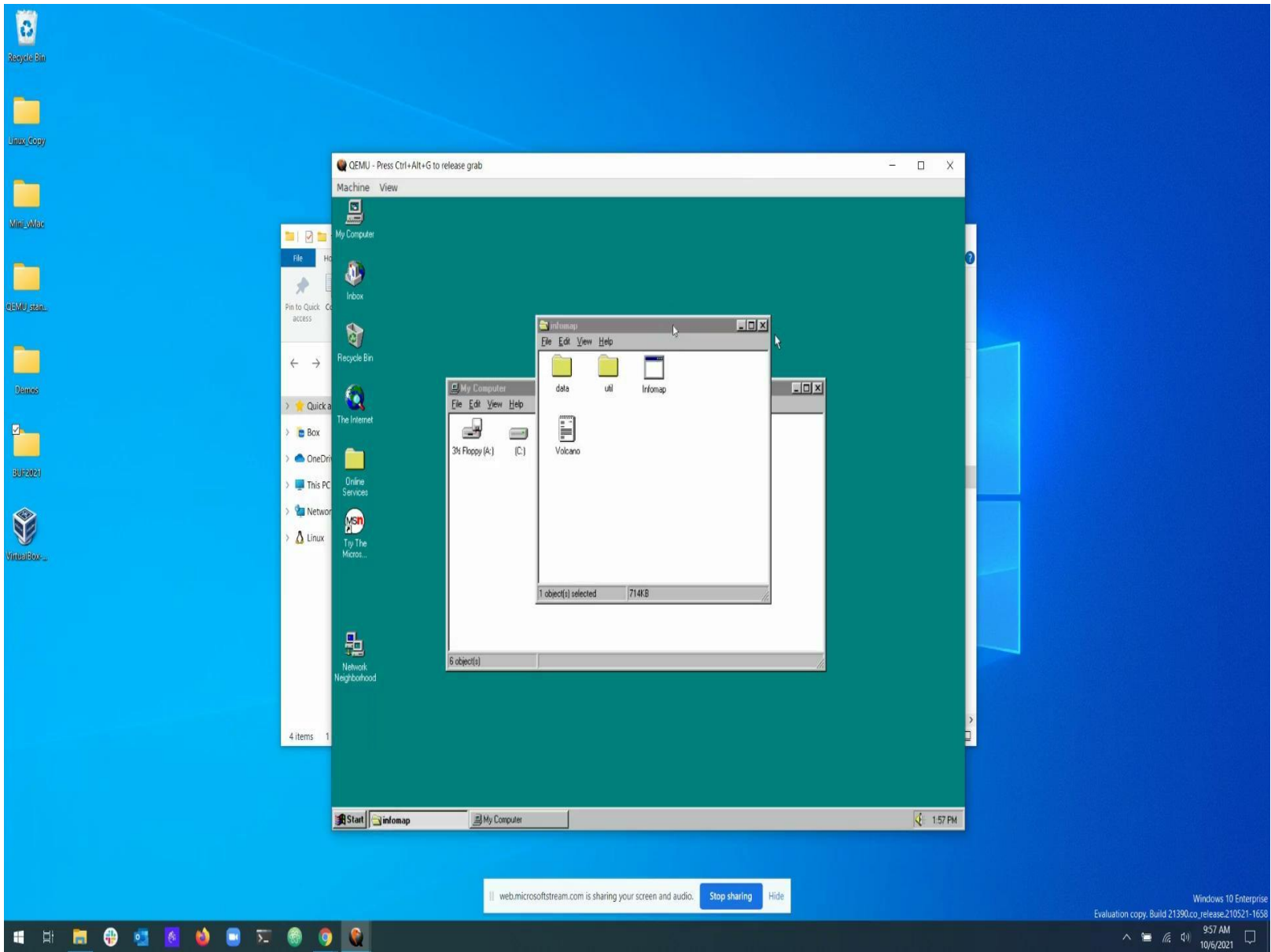
Scaling Data Item	current
Type of Intervals	trimmed
No of Intervals	6

Select option or tab to next entry

What do you need?



- **Windows 95 virtual machine**
 - Geospatial data and “Info-Map” application included
 - Familiar graphical interface
- **Ability to exchange/export files from Windows 95 virtual machine to user’s desktop (Windows 10)**
- **Avoid having to install and teach a new application just to run the virtual machine (e.g. VirtualBox, VMware)**



Tell me more!



- **Command-line application**
 - Some graphic interfaces (GUIs) from the community available depending on the OS
- **Available for macOS, Windows, Linux**
 - Yes, you can run QEMU-in-BitCurator-in-VirtualBox

Here are some
resources:



- [Official QEMU Documentation](#)
- [QEMU Wiki](#)
- [QEMU Wikibooks](#) (not officially associated with QEMU Project)
- [QEMU Tutorials](#) on Computer History Wiki
- [QEMU QED](#)

Thank you!

ethan.gates@yale.edu

[@The_BFOOL](#)

<https://forum.eaasi.cloud>

